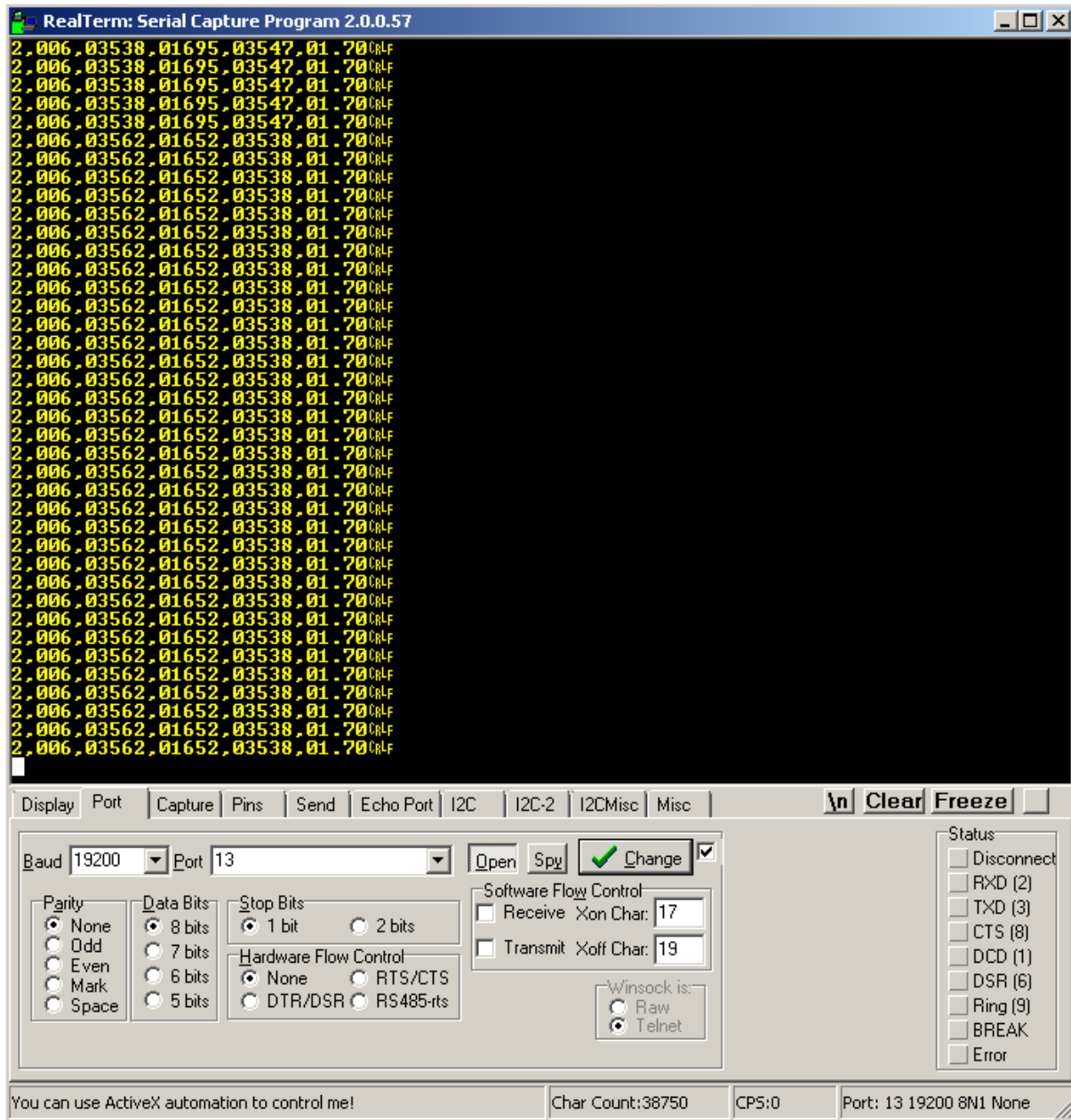


This is a screen shot of valve data for 100m in 30sec

S=0.21



This is a screen shot of packet data for 100m in 40sec

S=0.16

The screenshot displays the RealTerm Serial Capture Program 2.0.0.57 interface. The main window shows a list of captured packets in hexadecimal format, with each line representing a packet. The packets are numbered and contain hexadecimal data followed by a carriage return and line feed (CR-LF). The configuration panel at the bottom shows the following settings:

- Baud: 19200
- Port: 13
- Parity: None
- Data Bits: 8 bits
- Stop Bits: 1 bit
- Hardware Flow Control: None
- Software Flow Control: Receive Xon Char: 17, Transmit Xoff Char: 19
- Winsock is: Telnet

The status bar at the bottom indicates: "You can use ActiveX automation to control me!", "Char Count:136842", "CPS:0", and "Port: 13 19200 8N1 None".

This is a screen shot of packet data for 100m in 45sec

S=0.14

The screenshot displays the RealTerm Serial Capture Program 2.0.0.57 interface. The main window shows a list of captured packets in hexadecimal format, with each line representing a packet. The packets are numbered and contain various hexadecimal values. Below the packet list, there is a configuration panel with several tabs: Display, Port, Capture, Pins, Send, Echo Port, I2C, I2C-2, I2CMisc, and Misc. The Port tab is active, showing the following settings:

- Baud: 19200
- Port: 13
- Open: [button]
- Spj: [button]
- Change: [button]
- Change: [checkbox]

The configuration panel also includes sections for Parity, Data Bits, Stop Bits, Hardware Flow Control, Software Flow Control, and Winsock is:.

- Parity: None, Odd, Even, Mark, Space
- Data Bits: 8 bits, 7 bits, 6 bits, 5 bits
- Stop Bits: 1 bit, 2 bits
- Hardware Flow Control: None, RTS/CTS, DTR/DSR, RS485-rts
- Software Flow Control: Receive Xon Char: 17, Transmit Xoff Char: 19
- Winsock is: Raw, Telnet

On the right side of the configuration panel, there is a Status section with several checkboxes:

- Disconnect
- RXD (2)
- TXD (3)
- CTS (8)
- DCD (1)
- DSR (6)
- Ring (9)
- BREAK
- Error

At the bottom of the window, there is a status bar showing:

- Char Count: 186902
- CPS: 0
- Port: 13 19200 8N1 None