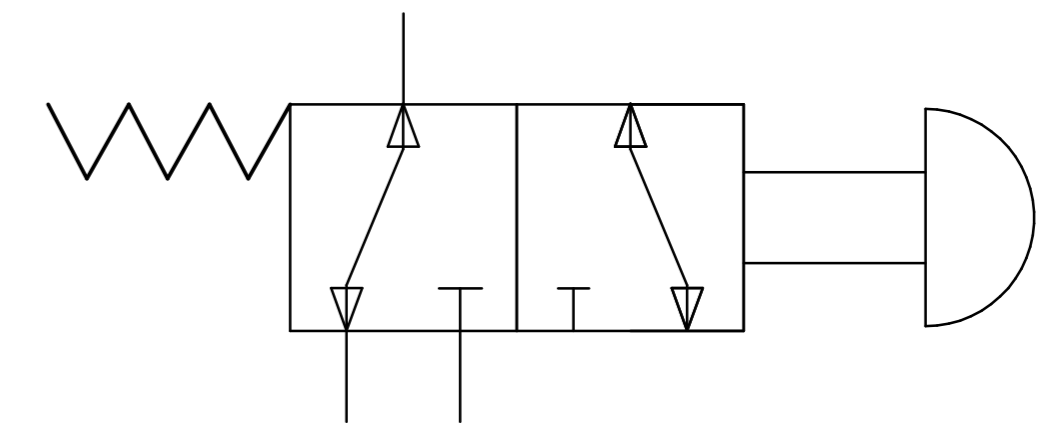
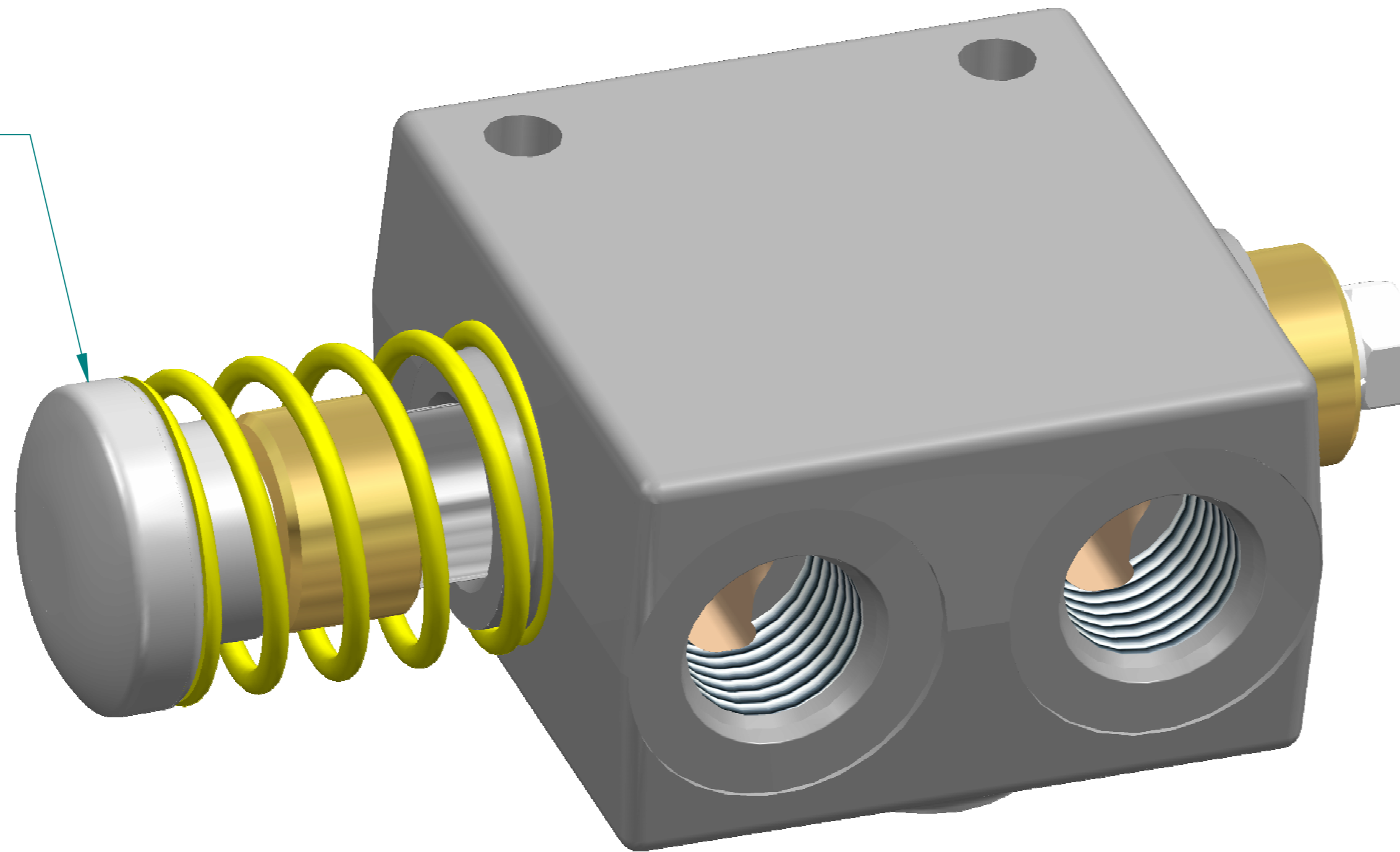


REVISION HISTORY			
REV	DESCRIPTION	DATE	APPROVED



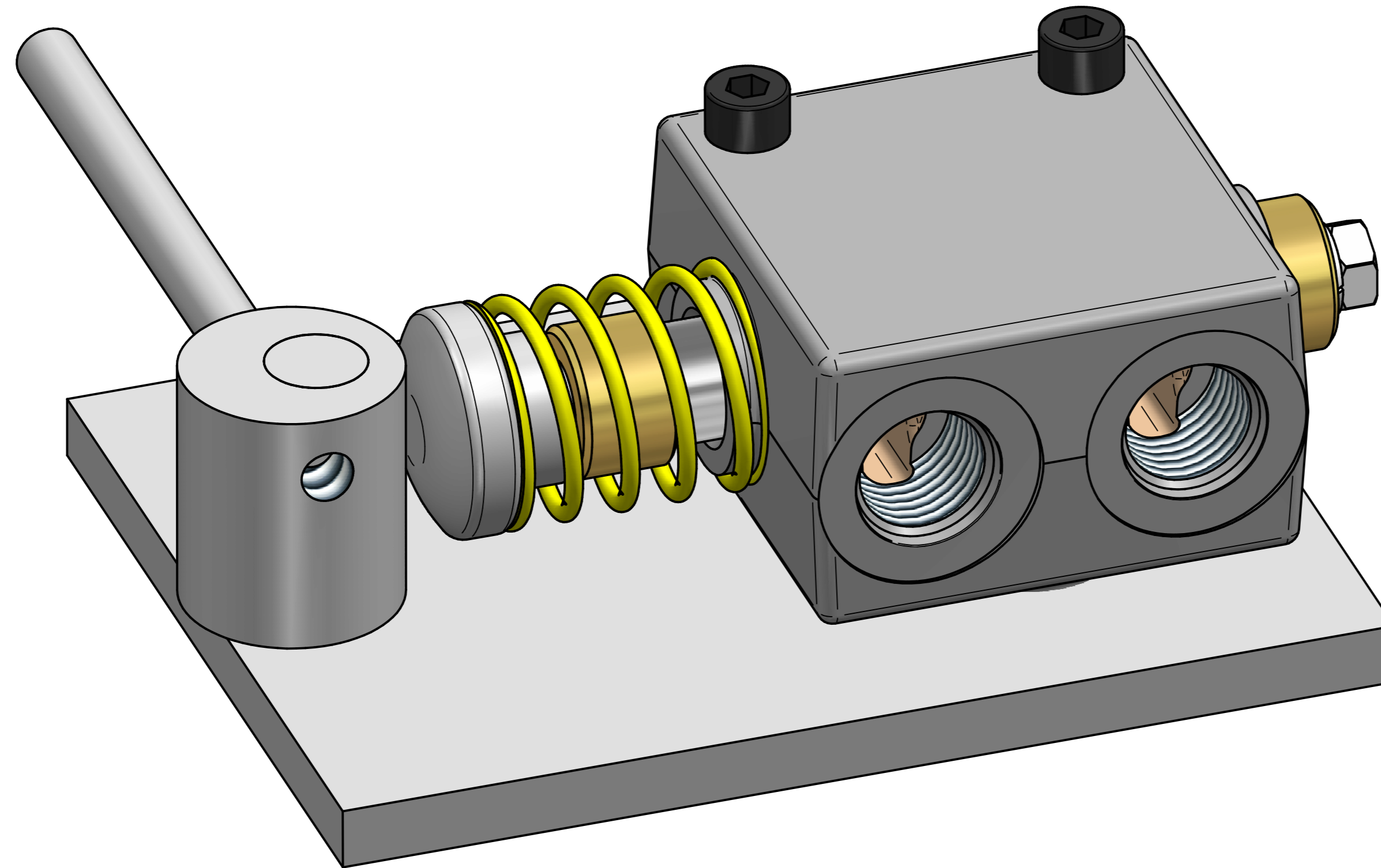
CAM FOLLOWER  
HARDENED STEEL



CAM OPERATED  
SPRING OFFSET SELECTOR VALVE

	NAME	DATE	<b>PREMAC</b>		
DRAWN	DG	07/18/16			
APPROVED					
MATERIAL					
TREATMENT			TITLE Cam Selector Valve		
UNLESS OTHERWISE SPECIFIED DIMENSIONS ARE IN MILLIMETERS			SIZE A4	DWG NO SVH10-SO-CAM	REV
1 <sup>ST</sup> ANGLE ANGLES ±0.1°			FILE NAME: Cam Selector Valve.dft		
2 PL ±0.02 3 PL ±0.005			SCALE:	WEIGHT:	SHEET 1 OF 2

REVISION HISTORY			
REV	DESCRIPTION	DATE	APPROVED



TYPICAL CAM APPLICATION

	NAME	DATE	<b>PREMAC</b>		
DRAWN	DG	07/18/16			
APPROVED					
MATERIAL					
TREATMENT			TITLE Cam Selector Valve		
UNLESS OTHERWISE SPECIFIED DIMENSIONS ARE IN MILLIMETERS			SIZE A4	DWG NO SVH10-SO-CAM	REV
1 <sup>ST</sup> ANGLE ANGLES ±0.1°			FILE NAME: Cam Selector Valve.dft		
2 PL ±0.02 3 PL ±0.005			SCALE:	WEIGHT:	SHEET 2 OF 2